



# Who can get a Blue Badge?

The rules for Wales



This document was written by the **Welsh Government**.  
It is an easy read version of 'Who is eligible for a Blue Badge?'

# How to use this booklet



This is an easy read document. You may still need support to read it. Ask someone you know to help you.



Llywodraeth Cymru  
Welsh Government

Where the document says **we**, this means **Welsh Government**. For more information contact:

**Website:**

[www.gov.wales/apply-or-renew-blue-badge](http://www.gov.wales/apply-or-renew-blue-badge)



[Easy Read Wales](#) made this document into Easy Read using **Photosymbols**. [To tell us what you think about this easy read version, click here.](#)

[Photosymbols Licence number 403527247](#)

# Contents

<b>About this booklet.....</b>	<b>4</b>
<b>Who can get a Blue Badge.....</b>	<b>6</b>
Automatic – You will get a Blue Badge.....	6
Discretionary – You might get a Blue Badge .....	9
Temporary – You might get a Blue Badge for 1 year.....	12
<b>Who cannot get a Blue Badge .....</b>	<b>14</b>
<b>Ways to apply for a Blue Badge .....</b>	<b>16</b>
<b>If your council say no.....</b>	<b>17</b>
<b>Find out more .....</b>	<b>18</b>

# About this booklet

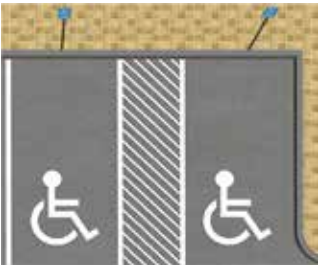


Llywodraeth Cymru  
Welsh Government

We are the Welsh Government.



This booklet is about who can get a **Blue Badge** in Wales.



The **Blue Badge** makes it easier for people to go to places. It helps them park near where they need to go.



You can get a **Blue Badge** even if you do not drive. The Badge is for **you**.



You can use it in any car when someone takes you somewhere.



If you have questions, ask your council. They are in charge of the **Blue Badge**.

# Who can get a Blue Badge



You can get a **Blue Badge** if you are in one of these groups:

## Automatic – You will get a Blue Badge



You can get a **Blue Badge** without assessment if you get:

**Personal Independence Payment (PIP) with:**

- 12 points for the **Planning and following a journey** part.
- 8 points or more for the **Moving around** part.



**You will need to show:**

An award letter from the **Department of Work and Pensions (DWP)**.





## Higher rate mobility component of Disability Living Allowance (HRMCDLA).



## You will need to show:

An award letter from the **Department of Work and Pensions (DWP)**.



## Armed Forces Compensation Scheme Tariff 1-8 (all of them).

This includes Permanent Mental Disorder under Tariff 6.



## War Pensioners' Mobility Supplement.



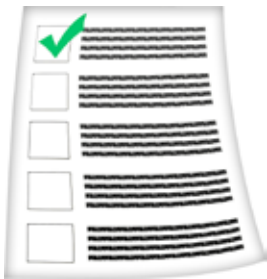
## You will need to show:

An award letter from the Ministry of Defence.

You can get a **Blue Badge** without assessment if you:



**Are Registered blind or have a severe sight impairment.**



**You will need to show 1 of these things:**

- A report from your **ophthalmologist**. This is your eye doctor.
- CV1/BD8 form saying that you are **severely sight impaired (blind)**.
- Proof your council has registered you as Sight Impaired at the severe level.



**Go to page 15 for how to apply for a Blue Badge.**



# Discretionary – You might get a Blue Badge



You might get a **Blue Badge** if you have some problems, but do not get Benefits. These are:



**You cannot walk, or you find it very hard to walk. You have a big problem with moving.**

- You must be more than 2 years old. And have a problem that will not get better.
- You must need things to help you walk or breathe to go 50 metres. Things like walking sticks, a rollator, or a wheelchair.



**You will need to:**

Talk to your council first about this. They will need to know more to give you a **Blue Badge**.



Do not ask your doctor for a letter.



**A child under 3 years old who has a problem that means they need:**

- Big medical equipment near them that is hard to carry.
- To be near a car to get medical help. Or need the car to get to a place that can help them.



**You will need to show:**

A letter from a **paediatrician**. This is a children's doctor.



**You have big problems with both your arms.**

You must find it very hard to use, or cannot use, parking machines. You can only use this badge when you drive the car.



**You will need to show:**

Your driving licence coded with these numbers:

- 40 (adapted steering) or
- 79 (vehicles with specifications).



**Severe Cognitive Impairment. This is when you have a problem with thinking.**

- You cannot find or go places without someone to help you.



**You will need to show:**

A letter from a healthcare person who helps you. For example, from a memory clinic.



**An illness you will die from within a year that makes it hard for you to move.**



**You will need to show:**

An **SR1 form** or a letter from a nurse who knows about your problem. For example, a nurse from Macmillan or Tenovus.



**Go to page 15 for how to apply for a Blue Badge.**

## Temporary – You might get a Blue Badge for 1 year



You can get a **Blue Badge** for 1 year if you are:

- getting better from,
- or waiting for help for,

big problems that make it very hard for you to move.



**Some of these problems might be:**



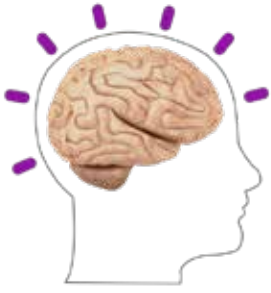
- You have a broken leg that has metal fixings on it for more than a year.



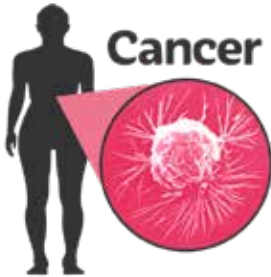
- You are getting better from or waiting for a new hip or knee.



- You are getting better from a very bad problem with your back.



- You are getting better from a **stroke** or head injury. A **stroke** is a problem with your brain that stops it working well.



- You are getting help for a problem like cancer.



### You will need to show:

A letter from a healthcare person who helps you.



Your council will usually ask you to have an assessment to get a **Blue Badge** for 1 year.



**Go to page 15 for how to apply for a Blue Badge.**

# Who cannot get a Blue Badge



You cannot get a **Blue Badge** for these things only:



- Being pregnant.



- Getting Lower Rate Disability Living Allowance.



- Getting Attendance Allowance.



- Having a problem with 1 arm.



- Having a problem with peeing or pooing, like Crohn's disease or Colitis.



- Having a problem with your leg or arm. So you have a cast on it for weeks or months.



- Having a problem that does not make it very hard for you to move.

# Ways to apply for a Blue Badge

You can:



Apply online at

[www.gov.uk/apply-blue-badge](http://www.gov.uk/apply-blue-badge).

It will send your form to your council.



Or apply through your council. You can find out how to do that on their website.



You do not need to pay for a **Blue Badge**. Do not use websites that ask for money to get a **Blue Badge**.



Do not lie when you apply for a **Blue Badge**. This is breaking the law.



# If your council say no



Your council is in charge of the **Blue Badge**.



Your council might say no to you having a **Blue Badge**.



You can only ask them again if you have more proof to show them.



If you are not happy with your council, you can complain to them.



We cannot make your council give you a **Blue Badge**.

# Find out more



If you have questions, ask your council.

To get more copies of this booklet:



**E-mail:** [CustomerHelp@gov.wales](mailto:CustomerHelp@gov.wales)



**Phone:** 0300 0604400



You can get this booklet in Welsh. You can write to us or call us in Welsh.